

## **HOLIDAY HOMEWORK**

### **SESSION 2022-23**

### **CLASS XII-A (SCIENCE)**

Q1:- Practice File handling questions as given in the given sample papers.(Which are not done in the class)

Q2. Go through the given link and prepare Networking Notes:-

<https://www.cbsetuts.com/important-questions-class-12-computer-science-python-networking-open-source-concepts/>

Q3:- Write and learn full forms of Networking Chapter.(attached)

Q4:- Learn the chapter Networking .

Q5:- Practice all file handling questions and save screen shots and paste the screen shots in ur practical copy.

Q6. Do 20 output based questions based on output finding based on functions.

Q7

:- Prepare two ppts to present in class after summer vacations. ( Chapter file handling and functions and revision tour.). u will get 10 minutes to present the topic.(Topics as allotted in the class to the individual)

**Pooja Gupta**

**PGT(CS)**

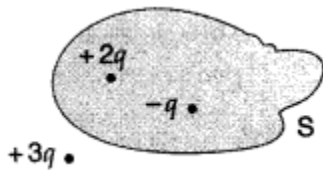
# KENDRIYA VIDYALAYA JHAGRAKHAND

CLASS 12A

PHYSICS

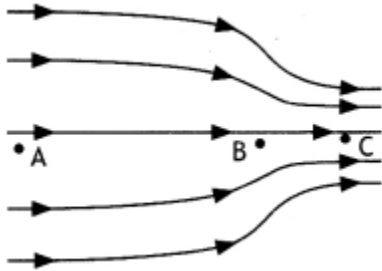
WORKSHEET 1( CHAPTER 1)

1. Which orientation of an electric dipole in a uniform electric field would correspond to stable equilibrium?
2. If the radius of the Gaussian surface enclosing a charge is halved, how does the electric flux through the Gaussian surface change ?
3. Define the term electric dipole moment of a dipole. State its S.I. unit
4. Figure shows three point charges,  $+2q$ ,  $-q$  and  $+3q$ . Two charges  $+2q$  and  $-q$  are enclosed within a surface 'S'. What is the electric flux due to this configuration through the surface 'S' (Delhi 2010)

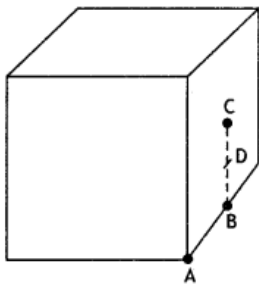


5. Why should electrostatic field be zero inside a conductor? (Delhi 2012)
6. A charge 'q' is placed at the centre of a cube of side l. What is the electric flux passing through each face of the cube? (All India 2012)
7. Two charges of magnitudes  $-3Q$  and  $+2Q$  are located at points  $(a, 0)$  and  $(4a, 0)$  respectively. What is the electric flux due to these charges through a sphere of radius ' $5a$ ' with its centre at the origin?
8. Draw a plot showing variation of electric field with distance from the centre of a solid conducting sphere of radius R, having a charge of  $+Q$  on its surface.
9. Derive an expression for the torque experienced by an electric dipole kept in a uniform electric field. (Delhi 2017)
10. Show that the electric field at the surface of a charged conductor is given by  $\vec{E} = \frac{\sigma}{\epsilon_0} \hat{n}$ , where  $\sigma$  is the surface charge density and  $\hat{n}$  is a unit vector normal to the surface in the outward direction. (All India 2010)
11. A thin straight infinitely long conducting wire having charge density  $\lambda$  is enclosed by a cylindrical surface of radius  $r$  and length  $l$ , its axis coinciding with the length of the wire. Find the expression for the electric flux through the surface of the cylinder. (All India 2011)
12. Plot a graph showing the variation of coulomb force (F) versus  $(1/R^2)$ , where  $r$  is the distance between the two charges of each pair of charges :  $(1\mu\text{C}, 2\mu\text{C})$  and  $(2\mu\text{C}, -3\mu\text{C})$ . Interpret the graphs obtained. (All India 2010)
13. A hollow cylindrical box of length 1m and area of cross-section  $25\text{ cm}^2$  is placed in a three dimensional coordinate system as shown in the figure. The electric field in the region is given by  $\vec{E} = 50x\hat{i}$  where E is in  $\text{NC}^{-1}$  and x is in metres. Find
  - Net flux through the cylinder.
  - Charge enclosed by the cylinder. (Delhi 2013)

14. Two charged spherical conductors of radii  $R_1$  and  $R_2$  when connected by a conducting wire acquire charges  $q_1$  and  $q_2$  respectively. Find the ratio of their surface charge densities in terms of their radii. (Delhi 2014)
15. A charge is distributed uniformly over a ring of radius 'a'. Obtain an expression for the electric intensity  $E$  at a point on the axis of the ring. Hence show that for points at large distances from the ring, it behaves like a point charge. (Delhi 2016)
16. Draw the pattern of electric field lines, when a point charge  $-Q$  is kept near an uncharged conducting plate. (CBSE Delhi 2019)
17. In the figure given below, at which point electric field is maximum?



18. What will be the total flux through the faces of the cube (figure) with the side of length 'a' if a charge  $q$  is placed at
- (a) A: a corner of the cube. (b) B: mid-point of an edge of the cube.  
 (c) C: center of the face of the cube. (d) D: mid-point of B and C. {NCERT Exemplar}



19. State Gauss's law in electrostatics. Derive an expression for the electric field due to an infinitely long straight uniformly charged wire
20. (a) Define electric flux. Write its S.I. units.  
 (b) Using Gauss's law, prove that the electric field at a point due to a uniformly charged infinite plane sheet is independent of the distance from it.  
 (c) How is the field directed if  
 (i) the sheet is positively charged,  
 (ii) negatively charged? (Delhi 2012)

Holiday homework class-XII

- 1) What is mitosis and meiosis ? Explain with the help of diagram.
- 2) Explain the structure of DNA and RNA .
- 3) Write the text question of the portion covered.
- 4) Study all the cell organelles and structure of cell.

**K V SECL JHAGRAKHAND**

**SUMMER VACATION HOME-WORK**

**Class 12**

**CHEMISTRY**

PROJECT:

Q1. Prepare chart on any topic related to your syllabus.

Q.2 Prepare a working model on any innovative science idea.

Q3. Prepare notes of the chapter Solution.

Q4. Solve NCERT text book exercise of the Chapter solution.

Q5. Read and prepare notes of the chapter Electrochemistry.

Q6. Complete your Practical notebook and complete your investigatory project assigned.

Q.7 Collect seeds of different fruits, dry them and bring them school for plantation purpose.

**KENDRIYA VIDYALAYA SECL, JHAGRAKHAND**  
**Summer Holiday Home Work and Assignment**  
**(2022 – 2023)**  
**Subject: English Core (301)**  
**Class – XII**

**Instructions:-**

- 1. Utilize your summer vacation constructively. Read good books / English newspaper daily. Obey your parents & help them. Be in touch with your subjects. Learn 5 new words with meaning daily.**
- 2. All summer assignments must be done in your homework copy (the writing work), Rest PPT. maintain in soft copy. Submit your summer holiday work by 23/06/2022**

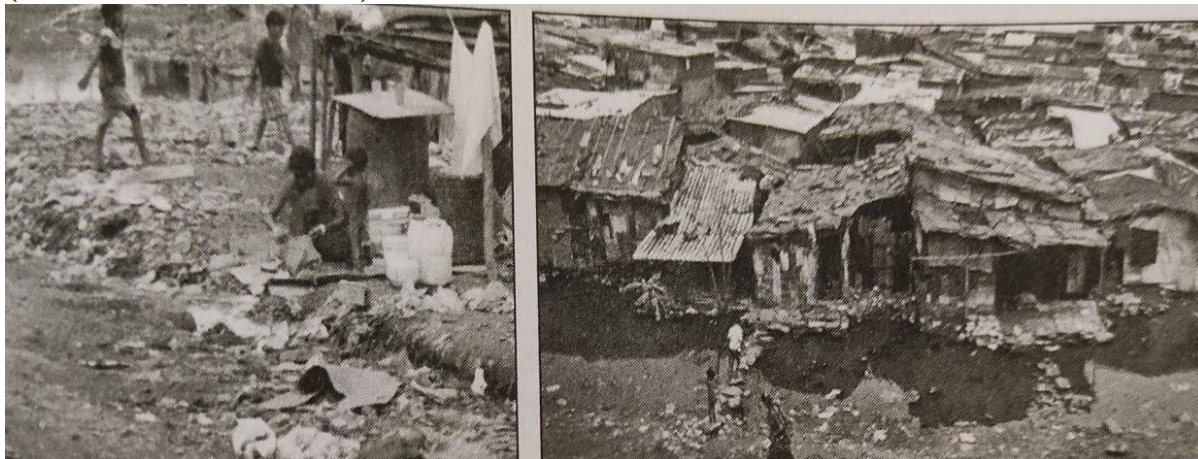
**Dear Students,**

**You are required to go through the given Holiday Homework and complete it sincerely.**

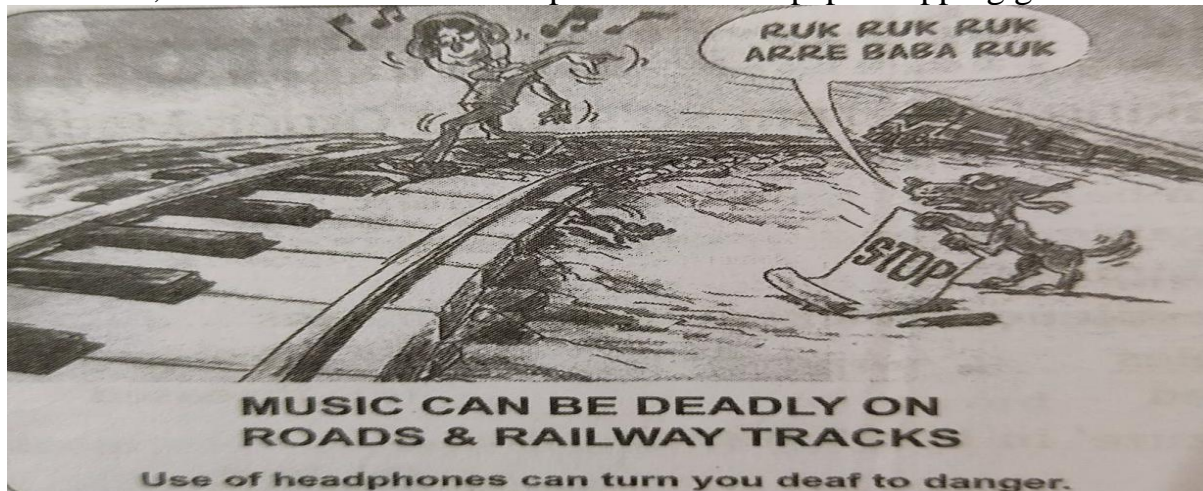
**Q1. Writing Article:-**

In India, the urban poor live in sub-human conditions in slums. Write an article on 'Possible Steps to Deal with Slums in India'. You are Kundan or Kashish, City Reporter of a newspaper. You can take help from the following visual.

**(Wordlimit: 120 – 150)**



**Q2. Write a letter in about 120 – 150 words to the Editor of a national daily expressing your views on the issue 'Dangers of Using Headphones on Roads and Railway Tracks'. Sign yourself as Himani / Hitesh Sabharwal of 69/7B, LokVihar, Rotheek. You can take help from the newspaper clipping given below.**



**Q3. Writing Notice:-**

The NCC Air Wing of your school is organising a visit to an Air Force Station in your area. As the Senior Under Officer of the wing write a notice in not more than **50** words for all the cadets informing them about the visit.

In your notice you should include the following information:
--

* date, time and place of the visit
-------------------------------------

* purpose of the visit e.g. air show, flying, study aircraft, interaction with Air Force personnel (Choose one only)
--

* Special instructions e.g. packed food and water, venue and time of reporting for the visit, compulsory participation (Choose one only)
--

Q3. Read the poem ‘An Elementary School Classroom in a Slum’, Make PowerPoint presentation of this poem. Your power Point presentation should include - about the Poet – main theme of the poem, difficult words and their meaning, Explanation of the poem accompanied by certain image or scenery apt with the stanza, and identification of literary devices used their in.

Q4. Read the Lesson ‘Deep water’ Make PowerPoint presentation of this Lesson. Your power Point presentation should include – about the Author – main theme of the lesson – Paragraph wise difficult words and their meaning, Explanation or main points, accompanied by certain image or scenery apt with the passage.

SUBJECT TEACHER

केंद्रीय वदयालय झगराखंड

ग्रीष्मकालीन अवकाश गृह कार्य

वषय हिंदी कक्षा बारहवीं

हिंदी परियोजना कार्य.. निम्न ल खत वषयों में से कसी एक वषय पर परियोजना कार्य तैयार करें।

\* वषय\*-

1. आदिकालीन हिंदी साहित्य में राष्ट्रीय चेतना
2. भक्तिकालीन हिंदी साहित्य में राष्ट्रीय चेतना
3. रीतिकालीन हिंदी साहित्य में राष्ट्रीय चेतना
4. भारतेन्दु युगीन हिंदी साहित्य में राष्ट्रीय चेतना
5. द् ववेदी युगीन हिंदी साहित्य में राष्ट्रीय चेतना
6. छायावादी हिंदी साहित्य में राष्ट्रीय चेतना
7. प्रगतिवादी हिंदी साहित्य में राष्ट्रीय चेतना
8. प्रयोगवादी हिंदी साहित्य में राष्ट्रीय चेतना
9. नई क वता में राष्ट्रीय चेतना
10. समकालीन हिंदी क वता में राष्ट्रीय चेतना



11. साठोत्तरी हिंदी क वता में राष्ट्रीय चेतना
12. हिंदी उपन्यासों में राष्ट्रीय चेतना
14. हिंदी कहानियों में राष्ट्रीय चेतना
15. हिंदी नाटक एवं एकांकी में राष्ट्रीय चेतना
16. लोक साहित्य में राष्ट्रीय चेतना
- 17 महादेवी वर्मा की रचना में नारी अस्मिता
- 18 - भक्तिन पाठ और आलोआंधारि में समानता
- 19 - वर्तमान समय के आधार पर वश्व स्तर पर हिंदी का महत्व
- 20 - हिंदी साहित्य में कृषक ( कसान ) जीवन
- 21 - मुंशी प्रेमचंद की रचना साहित्य में कृषक ( कसान ) जीवन
- 22 - बेबीहालदार के पाठ आलोआंधारि के आधार पर वर्तमान समाज में घरेलू नौकरों का जनजीवन
- 23 - हिंदी व्याकरण का महत्व
- 24 - हिन्दी साहित्य में रस और अलंकार का महत्व
- 25 - हिंदी में वर्णों का वर्गीकरण
- 26 - हिंदी साहित्य में स्त्री वमर्श का महत्व

- 27 - हिंदी साहित्य में दलित वर्ग का महत्त्व
- 28 - हिंदी साहित्य में आदिवासी वर्ग का महत्त्व
- 29 - हिंदी साहित्य में भक्ति काल का स्वर्णम इतिहास
- 30 - हिंदी साहित्य में रीति कालीन कवयों का महत्त्व
- 31 - हिंदी साहित्य की कवयत्रीमीराबाई और महादेवी वर्मा में समानता
- 32 - अक्कमहादेवी का स्त्री वर्ग की दृष्टि पर विशेष महत्त्व
- 33 - ' घर की याद ' कवता और ' कैदी और को कला ' कवता में एक रूपता
- 34 - राष्ट्रीय जीवन में समाचार पत्रों का महत्त्व
- 35 - हिंदी में संत साहित्य की अवधारणा
- 36 - कबीर दास की धार्मिक अवधारणा
- 37 - मीराबाई का कृष्ण की भक्तिभावना
- 38 - लता मंगेशकर की गायकी का विश्लेषणात्मक अध्ययन
- 39 - स्पीति में बारिश और साना साना हाथ जोड़ पाठ के आधार पर पहाड़ी जनजीवन
- 40 - अतीत में दबे पांव के आधार पर संघु सभ्यता पर प्रकाश
- 41 - हिंदी कहानी साहित्य में स्त्रियों की दयनीय दशा

- 42 - हिंदी कथा साहित्य में दलत जनजीवन
- 43 - हिंदी कथा साहित्य में स्त्री जनजीवन
- 44 - हिंदी नाटक में स्त्री जनजीवन
- 45 - वर्तमान परिपेक्ष में भक्तिन पाठ और आलोआंधारि पाठ के आधार पर घरेलू नौकरों का जनजीवन
- 46 - कबीरदास का व्यक्तित्व एवं कृतित्व
- 47 - समाज में व्याप्त कुरीतियों पर कबीरदास का व्यंग
- 48 - मीराबाई की भक्ति भावना , व्यक्तित्व एवं कृतित्व
- 49 - मुंशी प्रेमचंद के व्यक्तित्व कृतित्व का पुनर्मूल्यांकन
- 50 - मुंशी प्रेमचंद की रचनाओं में भारतीय कृषक जीवन एवं स्त्री स्मिता
- 51 - हिंदी रचना संसार में गजल का आवर्भाव
- 52 - दुष्यंत कुमार की गजल का एक अवलोकन
- 53 - फराक गोरखपुरी की गजल का पुनरावलोकन

नोट :- हिंदी साहित्य में राष्ट्रीय चेतना से सम्बंधित आप सभी को पढ़ाए गए पाठ से अन्य परियोजना कार्य भी स्वीकार्य होंगे।

परियोजना कार्य केवल 2000 से 2500 शब्दों तक का हो। उसमें चित्र अनिवार्य है ।

सन्दर्भों का यथास्थान प्रयोग करें। परियोजना कार्य भेजने से पूर्व भाषागत, तथ्यगत एवं व्याकरणक अशुद्धियों / त्रुटियों को भली-भांति जांच लें।

आलेख के अंत में अपना नाम , कक्षा , वर्ग , विद्यालय का पता अवश्य लखे